

# Karen Duncan Jewellery





**Karen Duncan** is a Burray lass and her jewellery designs strongly reflect her local roots in the linked South Isles. She was recently accepted into the Guild of Master Craftsmen, the first Orkney jeweller to gain this accolade, in recognition of the artisan skills she has honed over the last 30 years.

From an early age Karen showed an interest in working with her hands, and as a teenager she was fortunate to work with renowned silversmith David Hodge at his workshop in Burray during the school holidays. He taught Orkney jeweller Ola Gorie, among others, and opened Karen's eyes to the possibilities of silversmithing. "I loved seeing the transformation from raw material to finished objects", Karen says, and it whetted her appetite for more.

She became a trainee with Ola Gorie after leaving school, and went on to develop the diverse skills involved in both making jewellery and running a business.

In 2007 Karen took a leap of faith and set up on her own, establishing a workshop in the house she was building in Burray. With stunning views overlooking Water Sound and Churchill Barrier No 4, this is where Karen is happiest, creating new designs, experimenting with different textures and colours, perfecting each piece before it is packaged up ready for sale.

Karen comes from a long line of craftspeople. Her father designed and made wooden boats with his father and brother in the Burray boatyard operated by at least five generations of the Duncan family. They worked by eye and fine judgement, using an intimate knowledge of their materials and their craft to fashion boats which travelled all over the world.

Karen has adapted these inherited skills and her natural problem-solving abilities to the world of jewellery making. She can turn her hand to anything: one-off commissioned pieces for special occasions, remodelling or repairing existing pieces, as well as making her own designs.

From bubbles on the sea shore to the distinctive concrete blocks of the Churchill Barriers, Karen draws on the historic and landscape features around her to create her beautifully finished pieces. Constantly playing with ideas, she regularly brings out new designs.

Her Lamb Holm and Shield collections use motifs from the intricate metalwork wrought from scrap metal by the Italian prisoners who built the famous Italian Chapel on Lamb Holm. The Glimps Holm and Blocks ranges interpret in diverse ways the strong geometry of the Churchill Barriers, while her Solar design captures the magic of a solar eclipse, when the sun casts an aura around the moon.





# Solar

Inspired by the solar eclipse and the light from the sun emerging from behind the moon. We have used a square stone in contrast to the lovely round shape of the moon and the sunlight refracting around it.

LARGE PENDANT (33mm x 33mm) 18" curb chain or 16" wire



amethyst



blue topaz



cubic zirconia



garnet



peridot

SMALL PENDANT (20mm x 20mm) 18" curb chain or 16" wire



amethyst



blue topaz



cubic zirconia



garnet



peridot

DROP EARRINGS (20mm x 20mm)



amethyst



blue topaz



cubic zirconia



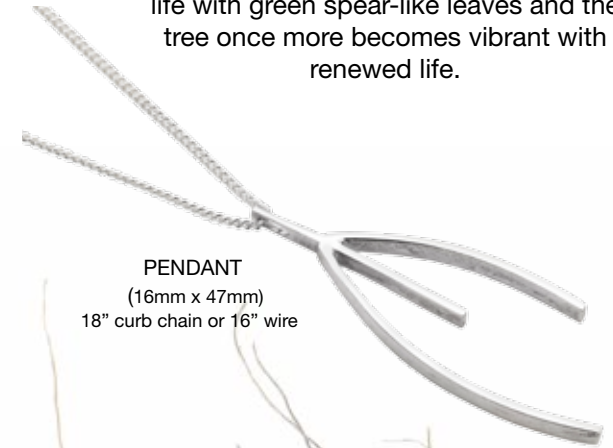
garnet



peridot

# Willow

Inspired by the shape of the bare branches against an overcast winter sky. The willow is an enduring tree and thrives in Orkney in spite of strong winds. In spring the branches come to life with green spear-like leaves and the tree once more becomes vibrant with renewed life.



PENDANT  
(16mm x 47mm)  
18" curb chain or 16" wire

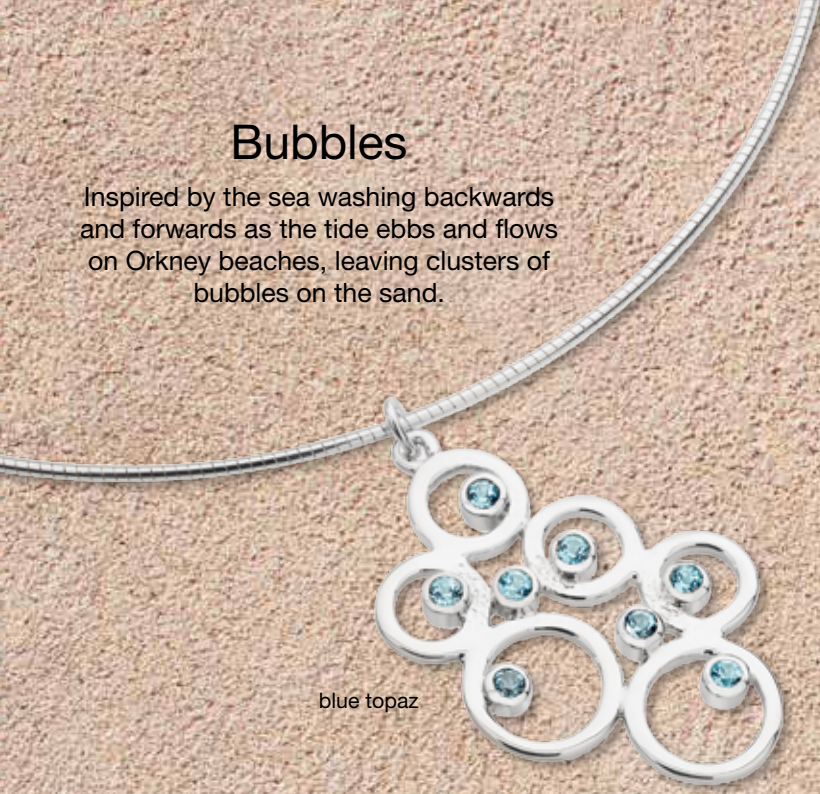


DROP EARRINGS  
(13mm x 38mm)



# Bubbles

Inspired by the sea washing backwards and forwards as the tide ebbs and flows on Orkney beaches, leaving clusters of bubbles on the sand.



blue topaz



amethyst



blue topaz



peridot

**SMALL PENDANT**  
(17mm x 29mm)  
18" curb chain or 16" wire

**LARGE DROP EARRINGS** (17mm x 29mm)



amethyst



blue topaz



cubic zirconia



peridot

**LARGE PENDANT** (25mm x 36mm) 18" curb chain or 16" wire



amethyst



cubic zirconia



peridot

**SMALL DROP EARRINGS** (9mm x 11mm)



amethyst



blue topaz



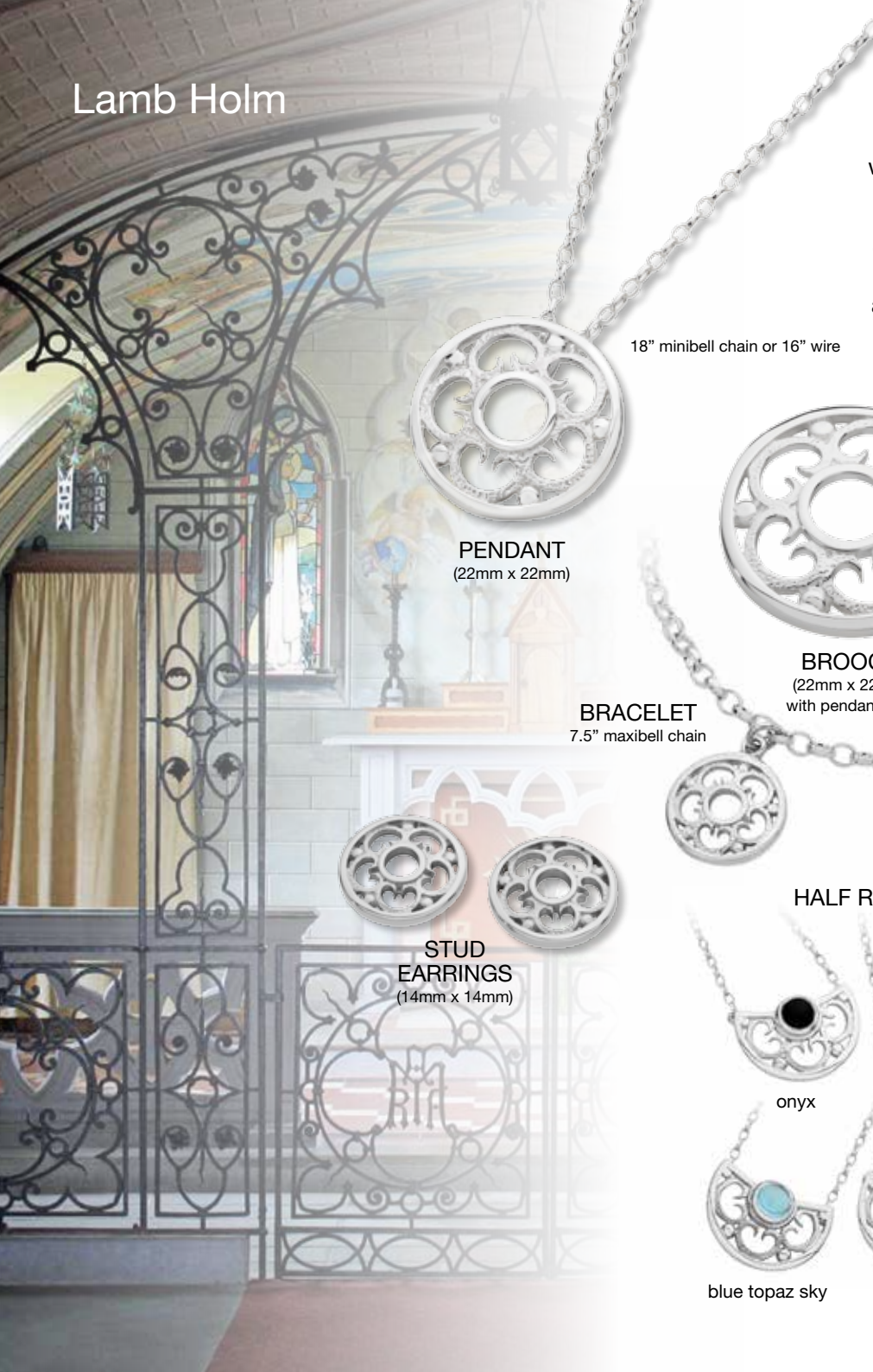
cubic zirconia



peridot



# Lamb Holm



**PENDANT**  
(22mm x 22mm)

18" minibell chain or 16" wire



**BROOCH**  
(22mm x 22mm)  
with pendant loop

**BRACELET**  
7.5" maxibell chain



**STUD EARRINGS**  
(14mm x 14mm)

# Lamb Holm and Shield

Inspired by the Italian Chapel, which was built as a place of worship by Italian POW's who were housed on Lamb Holm during WW2, while they built the Churchill Barriers. The chapel was built using scrap material and still stands as a memorial to man's faith, ingenuity and hope for peace in times of war.

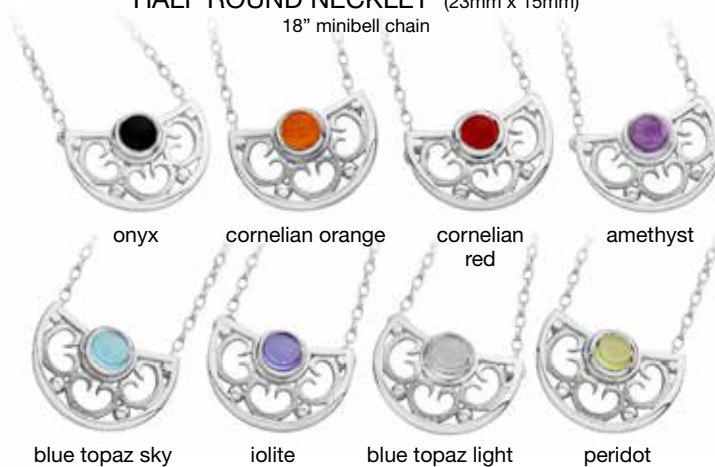
**CHARM**  
(14mm x 16mm)



**DROP EARRINGS**  
(14mm x 16mm)



**HALF ROUND NECKLET** (23mm x 15mm)  
18" minibell chain



onyx

cornelian orange

cornelian red

amethyst

blue topaz sky

iolite

blue topaz light

peridot

# Shield

18" maxibell chain



**PENDANT**  
(12mm x 31mm)

18" maxibell chain



**NECKLET**  
(small 31mm x 31mm)  
(large 37mm x 37mm)



**BRACELET**  
7.5" maxibell chain



**DROP EARRINGS**  
(12mm x 33mm)



**CHARM**  
(19mm x 21mm)



**BROOCH**  
(small 31mm x 31mm)  
(large 37mm x 37mm)





**BRACELET - blackened**  
7.5" trace chain

**BRACELET - plain**  
7.5" trace chain

## Blocks

In 1939 HMS Royal Oak was sunk in Scapa Flow. Winston Churchill ordered the construction of permanent concrete barriers to join four of the south isles to prevent further attacks. This design has been inspired by the blocks used in the construction of Churchill's legacy.

**CHARM** (7mm x 14mm)



**PENDANT** (12mm x 35mm)  
18" curb chain or 16" wire



**SMALL DROP EARRINGS** (7mm x 14mm)



**LARGE DROP EARRINGS** (7mm x 26mm)



**STUD EARRINGS** (7mm x 12mm)



blackened

plain

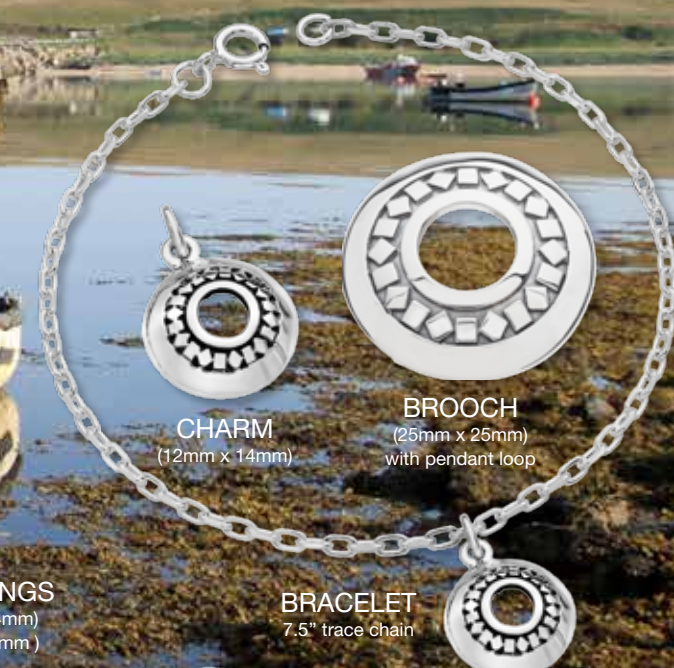
## Glimps Holm

Inspired by the large concrete blocks used in the construction of the Churchill Barriers in WW2. The island is a stepping stone between Lamb Holm and Burray and this gave the idea of the shape of this range – a round connecting stepping stone.



18" curb chain or 16" wire

**PENDANT**  
(25mm x 25mm)



**CHARM**  
(12mm x 14mm)

**BROOCH**  
(25mm x 25mm)  
with pendant loop

**DROP EARRINGS**  
(small 12mm x 14mm)  
(large 15mm x 17mm)

**BRACELET**  
7.5" trace chain



**STUD EARRINGS**  
(small 12mm x 12mm)  
(large 15mm x 15mm)